



Track Excavator

JY230E

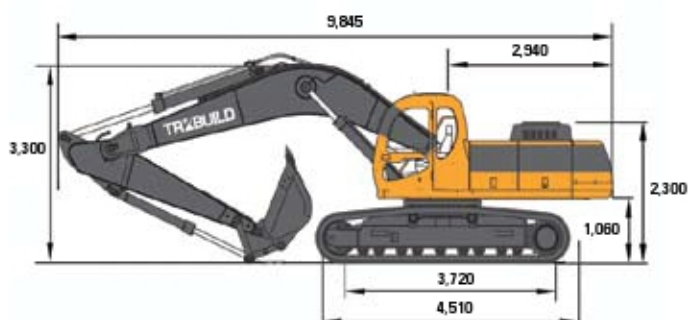
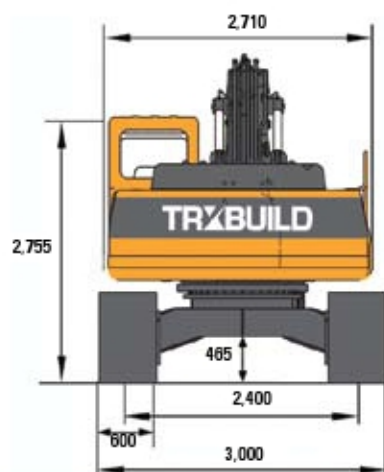
- Operating Weight (Ton) 23
- Standard Bucket Capacity (m³) 1
- Engine Power 126kW (172hp) @ 2,100rpm



Offering stable operations, even when the grounds are unstable

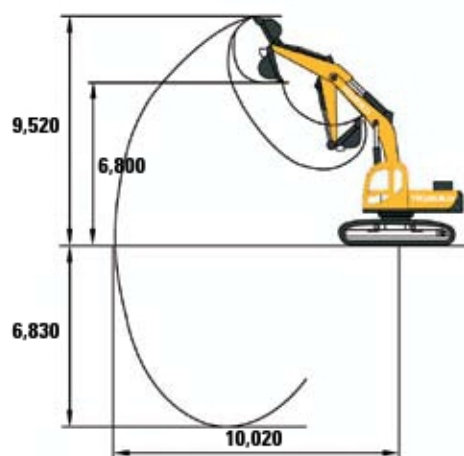
One of the most versatile excavators in the market, the JY230E is a sturdy and reliable general to heavy excavation machine that holds its ground over a wide array of terrains. From muddy riverbanks to gravel filled grounds, you will find this powerful workhorse a good all-rounder for just about any application.





SPECIFICATIONS

Operating Weight (Tons)	23	Hydraulic System	Well-known Brands
Standard Bucket Capacity (m³)	1	Max Hydraulic Flow (L/min)	2 X 235
Diesel Engine	Cummins	Max Working Pressure (MPa)	30
Engine Model	6BTA5.9-C	Travel Speed (km/h)	3~5
Engine Power (kW)	126kW (172hp) @ 2,100rpm	Grade Climbing Capacity (%)	65
Arm/Stick Digging Force (kN)	100	Slewing Speed (r/min)	13
Bucket Digging Force (kN)	130	Ground Pressure (kPa)	45



OPERATING SCOPE

Stick Length (mm)	3,000
Maximum Cutting Height (mm)	9,520
Maximum Dumping Height (mm)	6,800
Maximum Dumping Depth (mm)	6,830
Maximum Reach (mm)	10,020

APPLICATIONS



Note: Specifications are subject to change by the manufacturer without prior notice.



Track Excavator

JY640

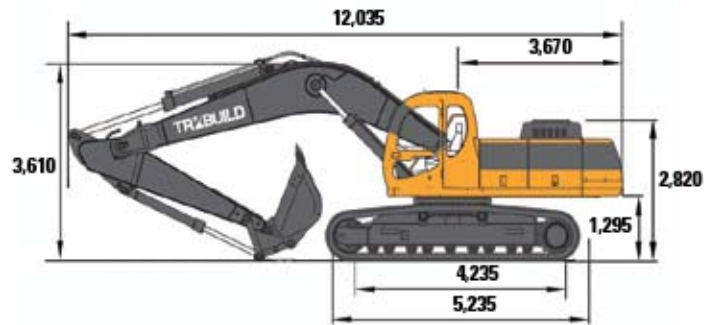
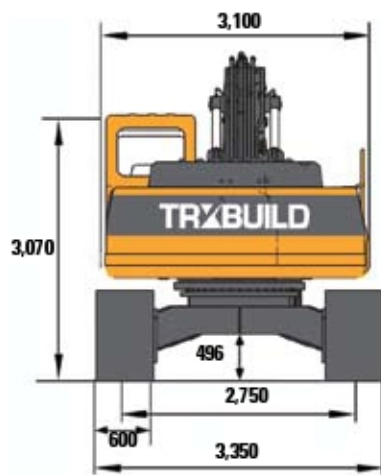
- Operating Weight (Ton) 40
- Standard Bucket Capacity (m³) 1.6
- Engine Power 235kW (320hp) @ 1,800rpm



Powered by advanced hydraulic technology, the JY640 offers superior performance in all types of mining and quarry applications

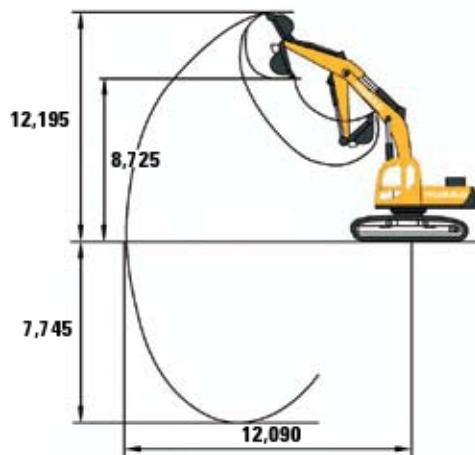
From our new line of crawler excavators come the JY640 – a combination of the latest hydraulic technology with electrical and structural engineering for reliability and efficiency outside its performance class. Suitable for quarry work, the JY640 is also an ideal excavator for all types of mining applications.





SPECIFICATIONS

Operating Weight (Tons)	40	Hydraulic System	Well-known Brand
Standard Bucket Capacity (m³)	1.6	Max Hydraulic Flow (L/min)	2 X 360
Diesel Engine	Cummins	Max Working Pressure (MPa)	30
Engine Model	M11-C315	Travel Speed (km/h)	2.9~5.5
Engine Power (kW)	235kW (320hp) @ 1,800rpm	Grade Climbing Capacity (%)	65
Arm/Stick Digging Force (kN)	169	Slewing Speed (r/min)	9
Bucket Digging Force (kN)	198	Ground Pressure (kPa)	77



OPERATING SCOPE

Arm/Stick Length (mm)	3,300
Maximum Digging Height (mm)	12,195
Maximum Dumping Height (mm)	8,725
Maximum Digging Depth (mm)	7,745
Maximum Reach (mm)	12,090

APPLICATIONS



Note: Specifications are subject to change by the manufacturer without prior notice.



Track Excavator

JY644

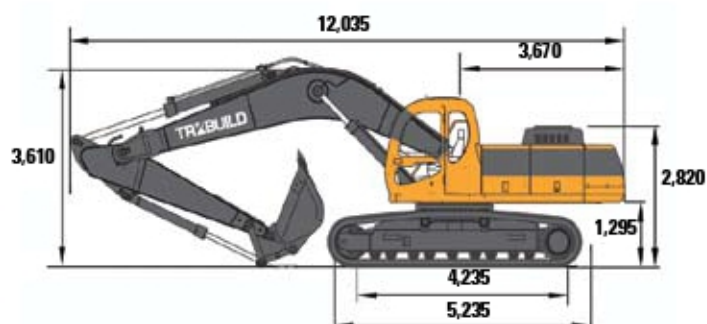
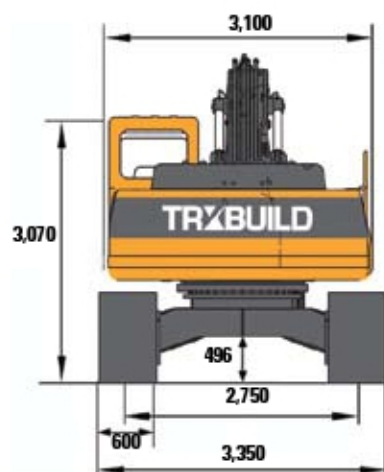
- Operating Weight (Ton) 44
- Standard Bucket Capacity (m³) 2
- Engine Power 235kW (320hp) @ 1,800rpm



Dynamic machine built to handle heavy work, the JY644 features even more efficient usage of the engine output for higher productivity

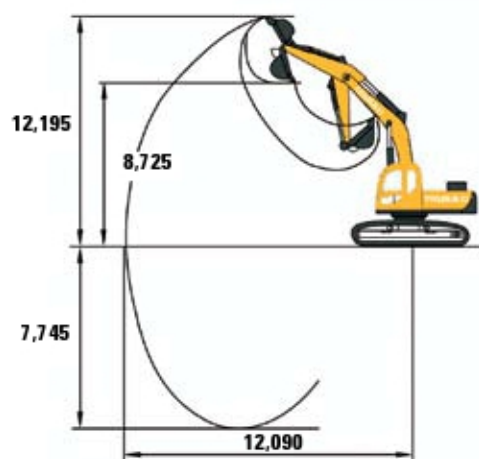
Sourcing components from renowned global manufacturers, the JY644 combines technology from the world over to bring you a reliable system that promises efficient productivity, whether you are looking at mining, quarry or mass excavations. Built for undertaking heavy constructions, the JY644 is ideal for big excavation needs.





SPECIFICATIONS

Operating Weight (Tons)	44	Hydraulic System	Well-known Brands
Standard Bucket Capacity (m³)	2	Max Hydraulic Flow (L/min)	2 X 360
Diesel Engine	Cummins	Max Working Pressure (MPa)	30
Engine Model	M11-C315	Travel Speed (km/h)	2.9 ~ 5.5
Engine Power (kW)	235kW (320hp) @ 1,800rpm	Grade Climbing Capacity (%)	65
Arm/Stick Digging Force (kN)	169	Slewing Speed (r/min)	9
Bucket Digging Force (kN)	198	Ground Pressure (kPa)	85



OPERATING SCOPE

Arm/Stick Length (mm)	3,300
Maximum Digging Height (mm)	12,195
Maximum Dumping Height (mm)	8,725
Maximum Digging Depth (mm)	7,745
Maximum Reach (mm)	12,090

APPLICATIONS



Note: Specifications are subject to change by the manufacturer without prior notice.



Track Excavator

JY210E

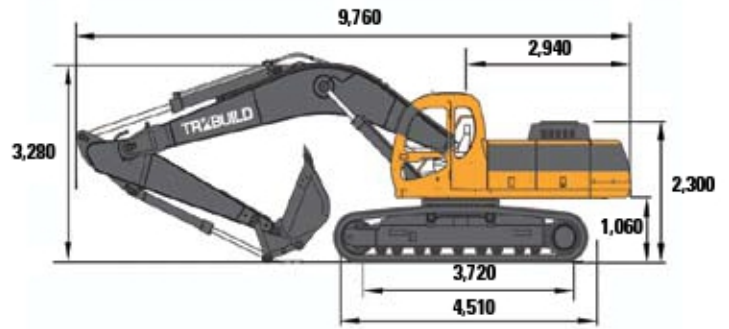
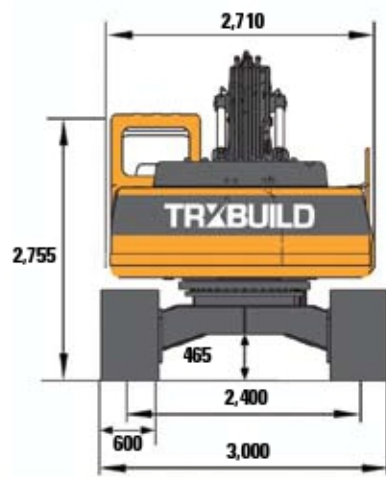
- Operating Weight (Ton) 21
- Standard Bucket Capacity (m³) 0.9
- Engine Power 126kW (172hp) @ 2,100rpm



Whatever task you throw at the JY210E, it will accomplish it and some more

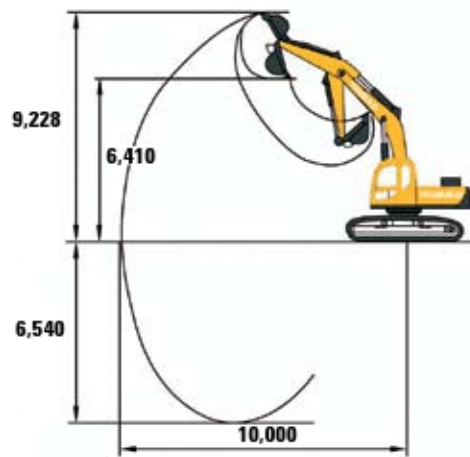
An able contender for the all-rounder division, the JY210E packs almost every excavation needs into one convenient machine. With the latest technological advancements that make it agile, strong and efficient, the JY210E will take on just about any task you set on it and perform far beyond your expectations in the fields of general constructions such as pipe laying and road building.





SPECIFICATIONS

Operating Weight (Tons)	21	Hydraulic System	Well-known Brands
Standard Bucket Capacity (m³)	0.9	Max Hydraulic Flow (L/min)	2 X 235
Diesel Engine	Cummins	Max Working Pressure (MPa)	30
Engine Model	6BTA5.9-C	Travel Speed (km/h)	3~5
Engine Power (kW)	126kW (172hp) @ 2,100rpm	Grade Climbing Capacity (%)	65
Arm/Stick Digging Force (kN)	102.5	Slewing Speed (r/min)	13
Bucket Digging Force (kN)	120.5	Ground Pressure (kPa)	42



OPERATING SCOPE

Arm/Stick Length (mm)	2,920
Maximum Digging Height (mm)	9,228
Maximum Dumping Height (mm)	6,410
Maximum Digging Depth (mm)	6,540
Maximum Reach (mm)	10,000

APPLICATIONS



Note: Specifications are subject to change by the manufacturer without prior notice.



Track Excavator

JY230LB

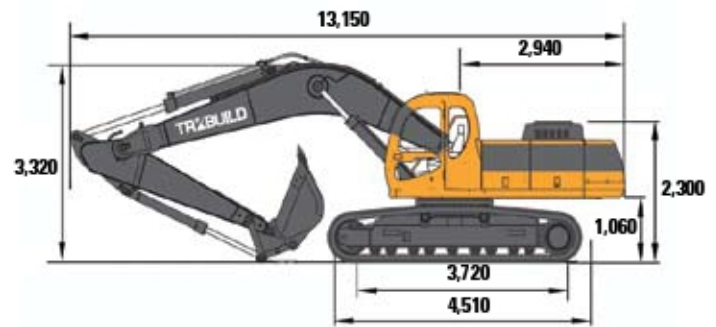
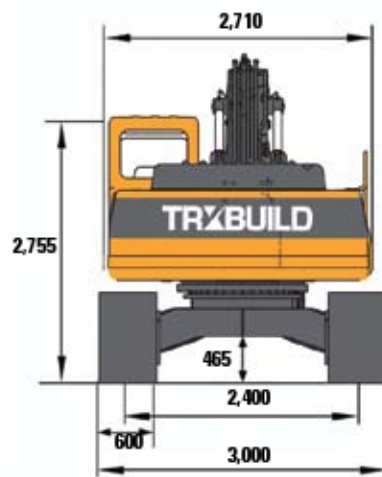
- Operating Weight (Ton) 24.1
- Standard Bucket Capacity (m³) 0.6
- Engine Power 126kW (172hp) @ 2,100rpm



With the JY230LB, excavation works near water is easy to handle

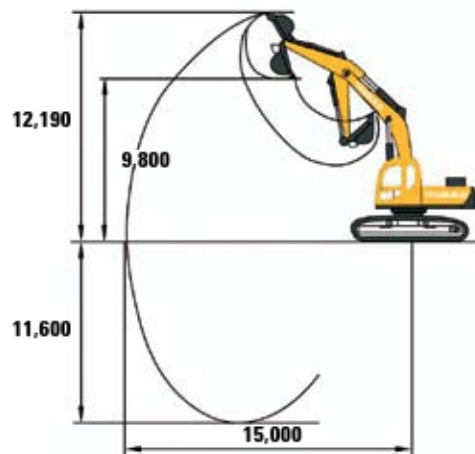
Designed to tackle hard to reach areas, the JY230LB is fitted with a tracked pontoon that reduces ground pressure, making it an ideal excavator that can transit between solid and swampy grounds. Made with multiple compartments to enhance safety and mobility, the pontoon structure comes in handy when excavation works need to be done near swampy areas, unstable grounds or wet underfoot conditions.





SPECIFICATIONS

Operating Weight (Tons)	24.1	Hydraulic System	Well-known Brands
Standard Bucket Capacity (m³)	0.6	Max Hydraulic Flow (L/min)	2 x 235
Diesel Engine	Cummins	Max Working Pressure (MPa)	30
Engine Model	6BTA5.9-C	Travel Speed (km/h)	3~5
Engine Power (kW)	126kW (172hp) @ 2,100 rpm	Grade Climbing Capacity (%)	65
Arm/Stick Digging Force (kN)	50	Slewing Speed (r/min)	13
Bucket Digging Force (kN)	64	Ground Pressure (kPa)	47



OPERATING SCOPE

Arm/Stick Length (mm)	5,200
Maximum Digging Height (mm)	12,190
Maximum Dumping Height (mm)	9,800
Maximum Digging Depth (mm)	11,600
Maximum Reach (mm)	15,000

APPLICATIONS



Note: Specifications are subject to change by the manufacturer without prior notice.



Grabber Excavator

JY400G

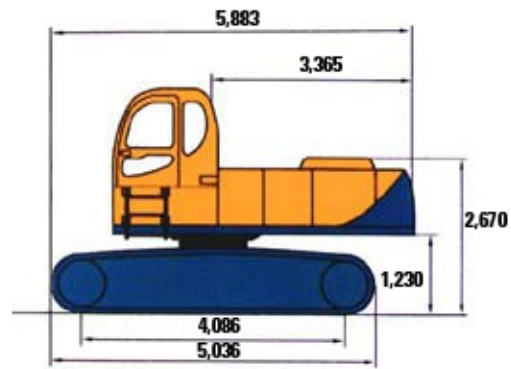
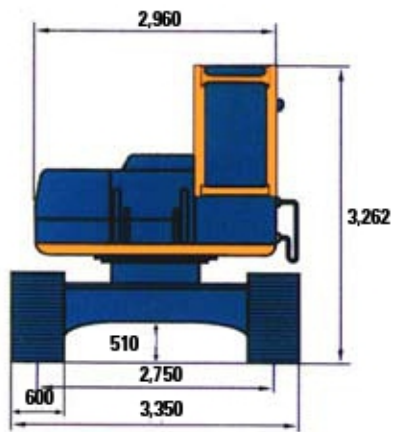
- Operating Weight (Ton) 40
- Standard Grabber Capacity (m³) 1
- Engine Power 194kW (264hp) @ 2,100rpm



With an elevated view of the work, increased productivity comes easy for this grabber excavator

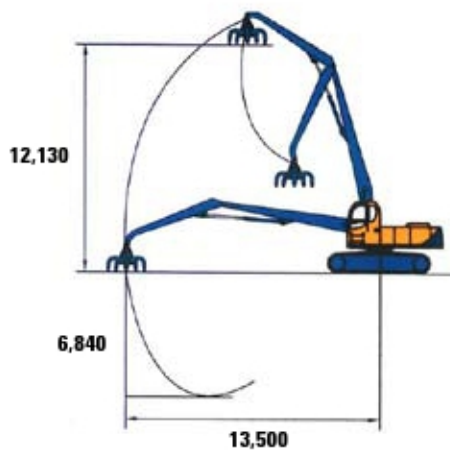
Designed especially for dealing with scrap metal, the JY400G comes with a standard grabbing attachment suitable for all kinds of scrapped iron. Coupled with a cabin that can be elevator for a better vantage point-of-view, this grabbing machine is a must-have for all scrap yards.





SPECIFICATIONS

Operating Weight (tons)	40	Hydraulic Flow Rate (L/min)	2 x 235
Standard Grabber Capacity	1	Hydraulic Pressure (MPa)	30
Diesel Engine	Cummins	Travelling Speed (km/h)	4.3
Engine Model	6CTA8.3-C	Grade Climbing Capacity (%)	65
Engine Power (kW)	194kw (264hp) @ 2,100rpm	Slewing Speed (r/min)	10
Hydraulic System	Well known Brands	Ground Pressure (kPa)	80



APPLICATIONS



OPERATING SCOPE

Stick Length (mm)	5,000
Maximum Digging Height (mm)	12,130
Maximum Dumping Height (mm)	12,130
Maximum Digging Depth (mm)	6,840
Maximum Reach (mm)	13,500

Note: Specifications are subject to change by the manufacturer without prior notice.



Track Excavator

JY608

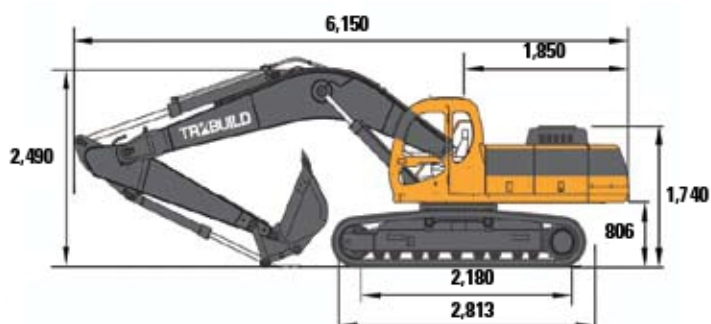
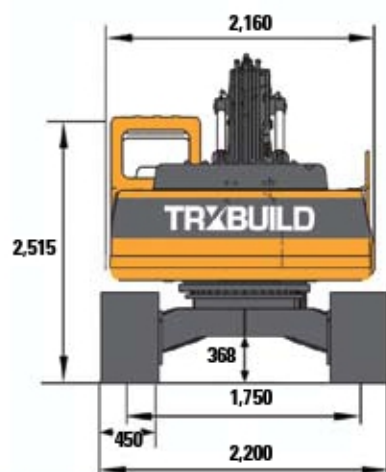
- Operating Weight (Ton) 8
- Standard Bucket Capacity (m³) 0.35
- Engine Power 60kW (82hp) @ 2,200rpm



Built for the urban environment, the JY608 is a small machine with a big working attitude

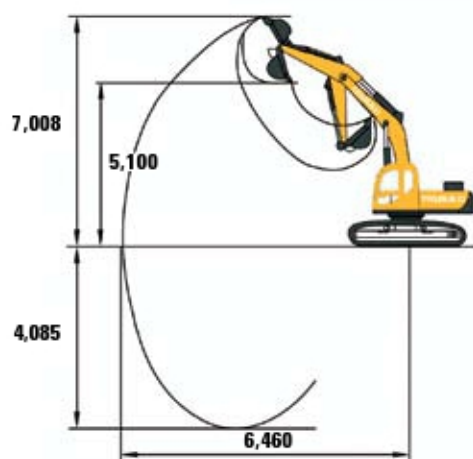
Made for the urban environment, the JY608 is a multi-talented wheeled excavator built with the city in mind. Comes complete with a loading sensor, this features not only ensure optimum loading, it also acts as an extra safety feature important to construction work within city life.





SPECIFICATIONS

Operating Weight (Tons)	8	Hydraulic System	Well-known Brands
Standard Bucket Capacity (m³)	0.35	Max Hydraulic Flow (L/min)	198
Diesel Engine	Cummins	Max Working Pressure (MPa)	30
Engine Model	B3.3	Travel Speed (km/h)	2.8~4.6
Engine Power (kW)	60kW (82hp) @ 2,200rpm	Grade Climbing Capacity (%)	65
Arm/Stick Digging Force (kN)	39.3	Slewing Speed (r/min)	12
Bucket Digging Force (kN)	58	Ground Pressure (kPa)	38



OPERATING SCOPE

Stick Length (mm)	1,780
Maximum Cutting Height (mm)	7,008
Maximum Dumping Height (mm)	5,100
Maximum Digging Depth (mm)	4,085
Maximum Reach (mm)	6,460

APPLICATIONS



Note: Specifications are subject to change by the manufacturer without prior notice.



Track Excavator

JY630

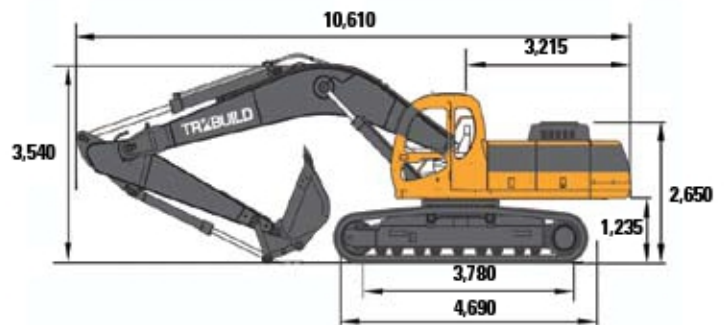
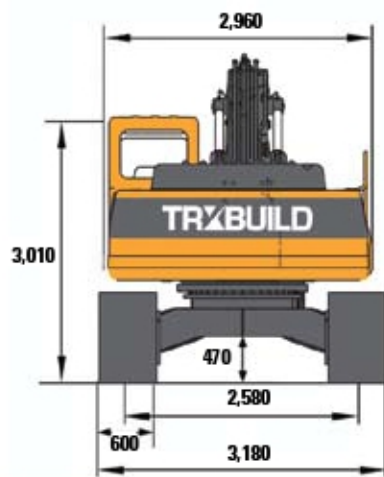
- Operating Weight (Ton) 30.8
- Standard Bucket Capacity (m³) 1.38
- Engine Power 205kW (279hp) @ 2,000rpm



Regardless of terrain, this crawler is built to perform and made with durability in mind

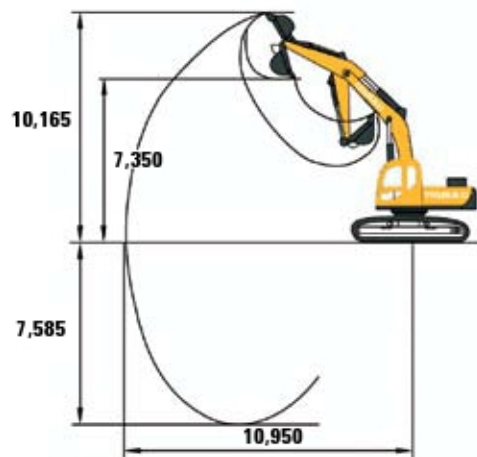
Assembled using quality components made by internationally renowned manufacturers, the JY630 is a symphony of advance technology in hydraulics, electrical and structural engineering. Suitable for movement in rough terrain, this powerful crawler is armed to get the job done on time, every time.





SPECIFICATIONS

Operating Weight (Tons)	30.8	Hydraulic System	Well-known Brands
Standard Bucket Capacity (m³)	1.38	Max Hydraulic Flow (L/min)	2 X 260
Diesel Engine	Cummins	Max Working Pressure (MPa)	30
Engine Model	C8.3-C	Travel Speed (km/h)	2.9~5.1
Engine Power (kW)	205kW (279hp) @ 2,000rpm	Grade Climbing Capacity (%)	65
Arm/Stick Digging Force (kN)	105	Slewing Speed (r/min)	11
Bucket Digging Force (kN)	141	Ground Pressure (kPa)	65



OPERATING SCOPE

Arm/Stick Length (mm)	3,200
Maximum Digging Height (mm)	10,165
Maximum Dumping Height (mm)	7,350
Maximum Digging Depth (mm)	7,585
Maximum Reach (mm)	10,950

APPLICATIONS



Note: Specifications are subject to change by the manufacturer without prior notice.



Track Excavator

JY632

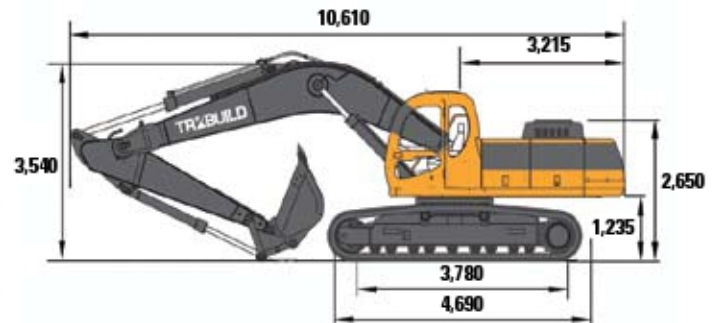
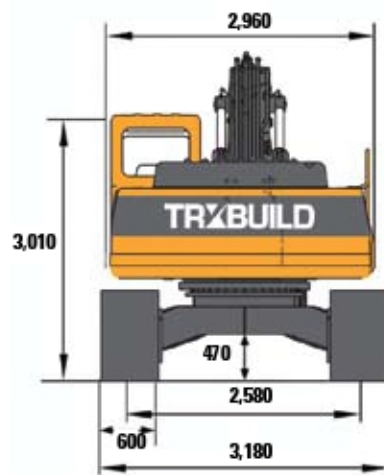
- Operating Weight (Ton) 32.7
- Standard Bucket Capacity (m³) 1.53
- Engine Power 205kW (279hp) @ 2,000rpm



From general excavations to municipal constructions, the JY632 gets the job done, every time

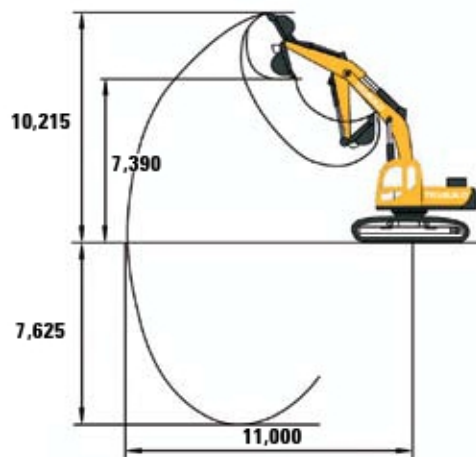
Built with durability in mind, this worthy workhorse features an engine that is highly efficient and economic to operate. Armed with hydraulic power steering and slew system that offers stability in rotation, the JY632 is the staple machine that no construction site can do without.





SPECIFICATIONS

Operating Weight (Tons)	32.7	Hydraulic System	Well-known Brands
Standard Bucket Capacity (m³)	1.53	Max Hydraulic Flow (L/min)	2 X 260
Diesel Engine	Cummins	Max Working Pressure (MPa)	30
Engine Model	C8.3-C	Travel Speed (km/h)	2.9~5.1
Engine Power (kW)	205kW (279hp) @ 2,000rpm	Grade Climbing Capacity (%)	65
Arm/Stick Digging Force (kN)	104	Slewing Speed (r/min)	11
Bucket Digging Force (kN)	137	Ground Pressure (kPa)	69



OPERATING SCOPE

Arm/Stick Length (mm)	3,200
Maximum Digging Height (mm)	10,215
Maximum Dumping Height (mm)	7,390
Maximum Digging Depth (mm)	7,625
Maximum Reach (mm)	11,000

APPLICATIONS



Note: Specifications are subject to change by the manufacturer without prior notice.



Wheel Excavator

JYL608

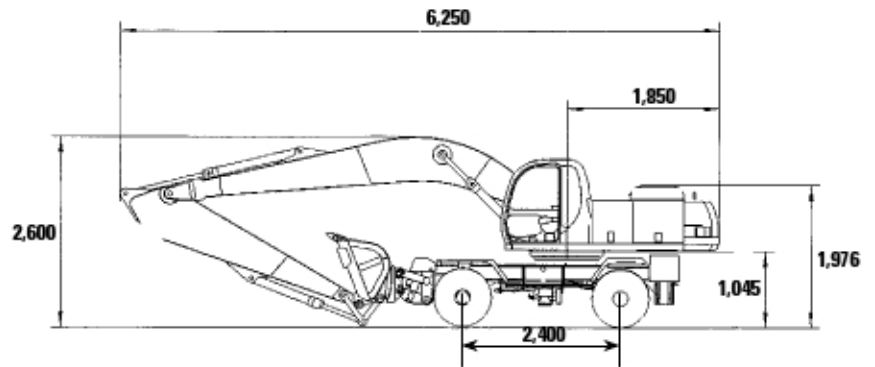
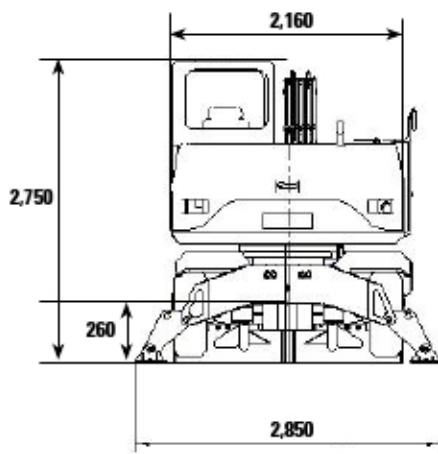
- Operating Weight (Ton) 8.2
- Standard Bucket Capacity (m³) 0.35
- Engine Power 60kW (82hp) @ 2,200rpm



The powerful wheel excavator that can reach into small spaces and hard to get places

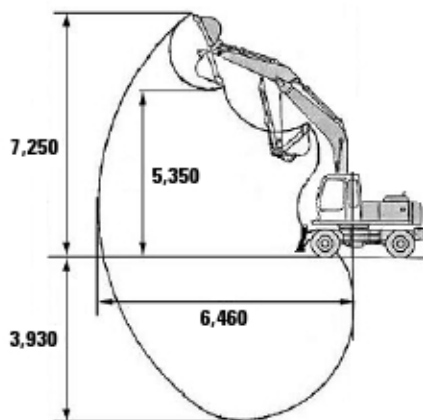
Built for city life, the JYL608 is a wheel excavator powerful enough for most general applications. Comes complete with a loading sensor, this feature not only ensures optimum loading but also provides extra safety imperative for construction work within city life.





SPECIFICATIONS

Operating Weight (Tons)	8.2	Hydraulic System	Well-known Brands
Standard Bucket Capacity (m³)	0.35	Max Hydraulic Flow (L/min)	170
Diesel Engine	Cummins	Max Working Pressure (MPa)	30
Engine Model	B3.3	Travel Speed (km/h)	25
Engine Power	60kw (82hp) @ 2,200rpm	Grade Climbing Capacity (%)	40%
Arm/Stick Digging Force (kN)	39.3	Slewing Speed (r/min)	12
Bucket Digging Force (kN)	58	Standard Tyres	12 - 16.5_14PR



APPLICATIONS



OPERATING SCOPE

Arm/Stick Length (mm)	1,780
Maximum Digging Height (mm)	7,250
Maximum Dumping Height (mm)	5,350
Maximum Digging Depth (mm)	3,930
Maximum Reach (mm)	6,460

Note: Specifications are subject to change by the manufacturer without prior notice.



Wheel Excavator

JYL619

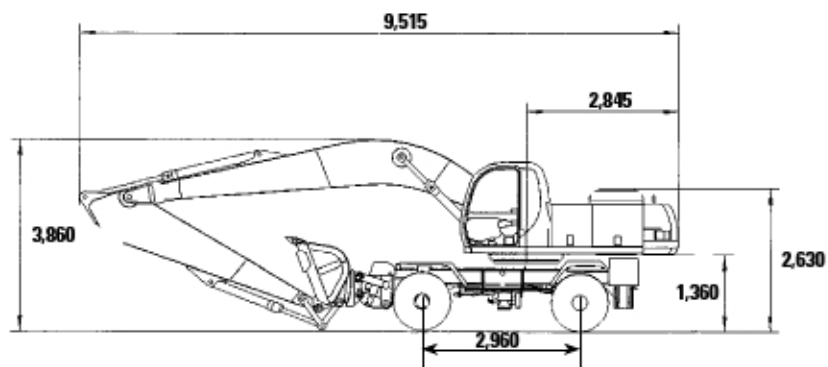
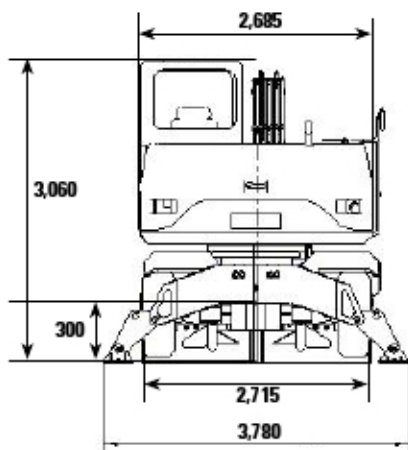
- Operating Weight (Ton) 20
- Standard Bucket Capacity (m³) 0.8
- Engine Power 108kW (147hp) @ 2,100rpm



With the latest technology, the JYL619 offers quick mobility and turnaround time for urban based construction

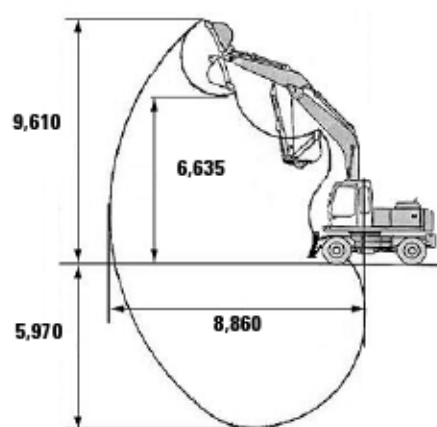
Built especially with agility in mind, the JYL619 is the new-generation excavator designed for quick turn-around use within urban territories. Combining the latest advanced hydraulic technology and electrical systems, reliability and efficient performance comes naturally to this wheeled performer.





SPECIFICATIONS

Operating Weight (Tons)	20	Hydraulic System	Well-known Brands
Standard Bucket Capacity (m³)	0.8	Max Hydraulic Flow (L/min)	2 X 195
Diesel Engine	Cummins	Max Working Pressure (MPa)	30
Engine Model	6BT5.9-C	Travel Speed (km/h)	28
Engine Power (kW)	108kW (147hp) @ 2,100rpm	Grade Climbing Capacity (%)	40%
Arm/Stick Digging Force (kN)	95	Slewing Speed (r/min)	12.5
Bucket Digging Force (kN)	120	Standard Tyres	12.5 - 20_18PR



APPLICATIONS



OPERATING SCOPE

Arm/Stick Length (mm)	2,400
Maximum Digging Height (mm)	9,610
Maximum Dumping Height (mm)	6,635
Maximum Digging Depth (mm)	5,970
Maximum Reach (mm)	8,860



Note: Specifications are subject to change by the manufacturer without prior notice.



Wheel Excavator

JYL210E

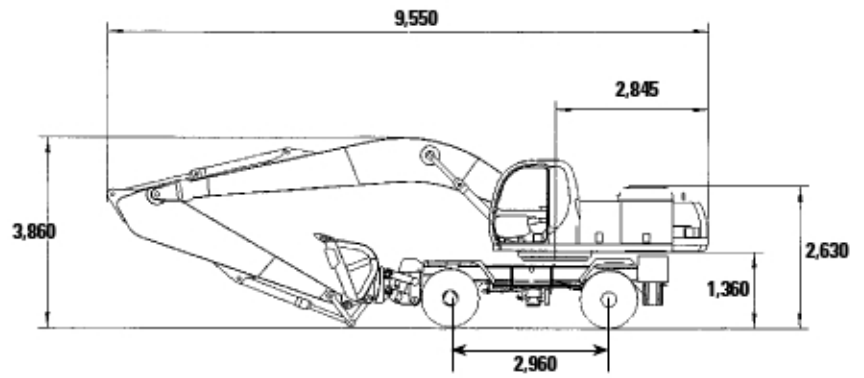
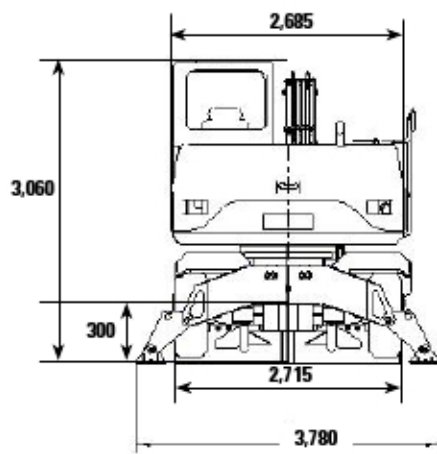
- Operating Weight (Ton) 21
- Standard Bucket Capacity (m³) 0.9
- Engine Power 108kw (147hp) @ 2,100rpm



Latest Technology in Electrical Control System to ensure Efficient Operability and Comfort

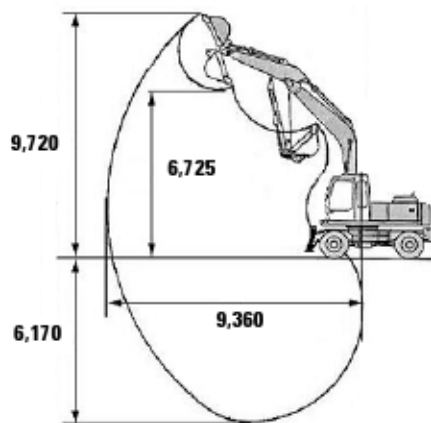
Built especially with agility in mind, the JYL210E is the new-generation excavator designed for quick turn-around use within urban territories. Combining the latest advanced hydraulic technology and electrical systems, reliability and efficient performance comes naturally to this wheeled performer, the ideal machine for city work and pipe laying applications.





SPECIFICATIONS

Operating Weight (Tons)	21	Hydraulic System	Well-known Brands
Standard Bucket Capacity (m³)	0.9	Max Hydraulic Flow (L/min)	2 X 195
Diesel Engine	Cummins	Max Working Pressure (MPa)	30
Engine Model	6BT5.9-C	Travel Speed (km/h)	28
Engine Power (kW)	108kW (147hp) @ 2,100rpm	Grade Climbing Capacity (%)	40%
Arm/Stick Digging Force (kN)	90	Slewing Speed (r/min)	12.5
Bucket Digging Force (kN)	120	Standard Tyres	12.5 - 20_18PR



APPLICATIONS



OPERATING SCOPE

Arm/Stick Length (mm)	2,600
Maximum Digging Height (mm)	9,720
Maximum Dumping Height (mm)	6,725
Maximum Digging Depth (mm)	6,170
Maximum Reach (mm)	9,360

Note: Specifications are subject to change by the manufacturer without prior notice.



Wheel Excavator

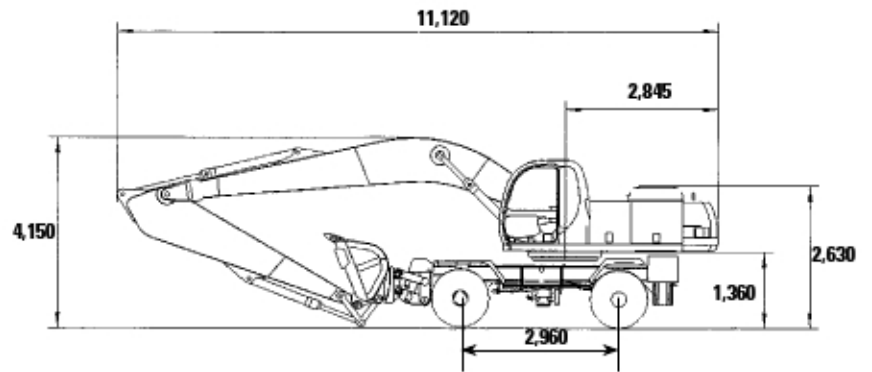
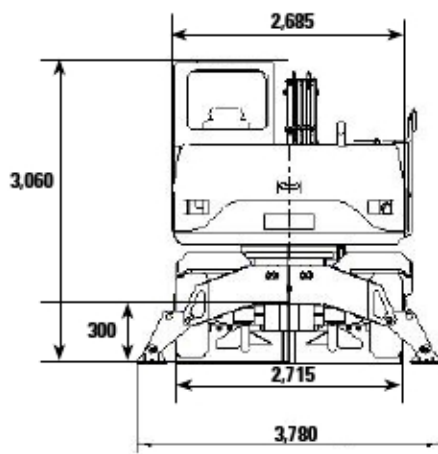
JYL210LB

- Operating Weight (Ton) 22
- Standard Bucket Capacity (m³) 0.45
- Engine Power 108kw (147hp) @ 2,100rpm



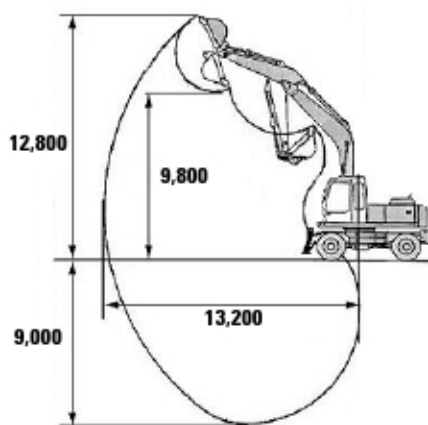
Latest Technology in Electrical Control System to ensure Efficient Operability and Comfort

Built especially with agility in mind, the JYL210LB is the new-generation excavator designed for quick turn-around use within urban territories. Combining the latest advanced hydraulic technology and electrical systems, reliability and efficient performance comes naturally to this wheel performer.



SPECIFICATIONS

Operating Weight (Tons)	22	Hydraulic System	Well-known Brands
Standard Bucket Capacity (m³)	0.45	Max Hydraulic Flow (L/min)	2 X 195
Diesel Engine	Cummins	Max Working Pressure (MPa)	30
Engine Model	6BTA5.9-C	Travel Speed (km/h)	28
Engine Power (kW)	108kW (147hp) @ 2,100rpm	Grade Climbing Capacity (%)	40%
Arm/Stick Digging Force (kN)	77	Slewing Speed (r/min)	12.5
Bucket Digging Force (kN)	59	Standard Tyres	12.5 - 20_18PR



APPLICATIONS



OPERATING SCOPE

Arm/Stick Length (mm)	4,900
Maximum Digging Height (mm)	12,800
Maximum Dumping Height (mm)	9,800
Maximum Digging Depth (mm)	9,000
Maximum Reach (mm)	13,200



Note: Specifications are subject to change by the manufacturer without prior notice.



Wheel Excavator

JYL615

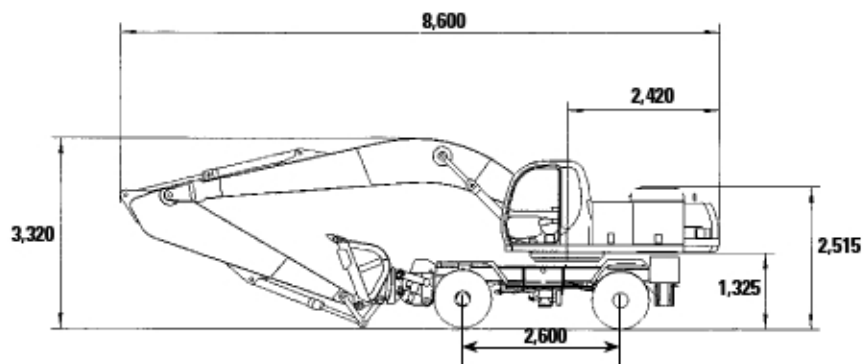
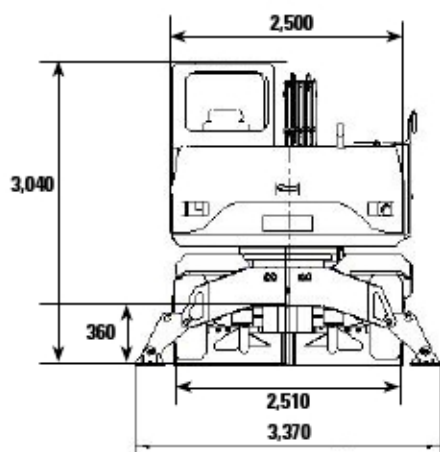
- Operating Weight (Ton) 15
- Standard Bucket Capacity (m³) 0.55
- Engine Power 97kW (132hp) @ 2,500rpm



Ergonomically designed for comfortable operation, the JYL615 is the ultimate city warrior

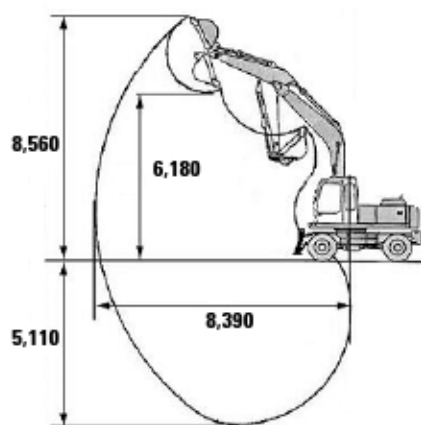
Especially designed for light construction, the JYL615 provides for reliable and efficient performance with the fuel-efficient dual hydraulic pump. Ideal for applications such as urban construction, road maintenance and pipe laying, the JYL615 is an able-bodied all-rounder for every urban construction need.





SPECIFICATIONS

Operating Weight (Tons)	15	Hydraulic System	Well-known Brands
Standard Bucket Capacity (m³)	0.55	Max Hydraulic Flow (L/min)	2 X 157
Diesel Engine	Cummins	Max Working Pressure (MPa)	30
Engine Model	4BTA3.9-C	Travel Speed (km/h)	20
Engine Power (kW)	97kW (132hp) @ 2,500rpm	Grade Climbing Capacity (%)	40
Arm/Stick Digging Force (kN)	70	Slewing Speed (r/min)	11
Bucket Digging Force (kN)	92	Standard Tyres	10.00 - 20_16PR



APPLICATIONS



OPERATING SCOPE

Arm/Stick Length (mm)	2,400
Maximum Digging Height (mm)	8,560
Maximum Dumping Height (mm)	6,180
Maximum Digging Depth (mm)	5,110
Maximum Reach (mm)	8,390



Note: Specifications are subject to change by the manufacturer without prior notice.



Track Excavator

JY624

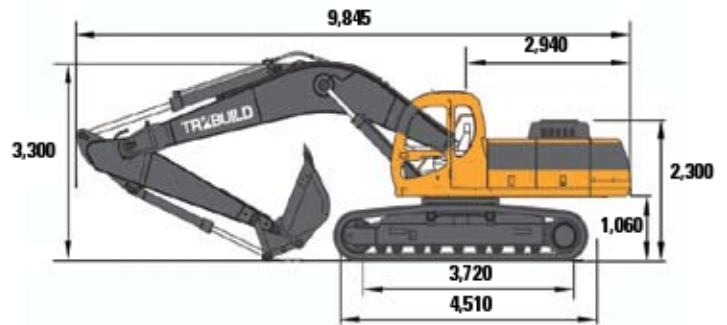
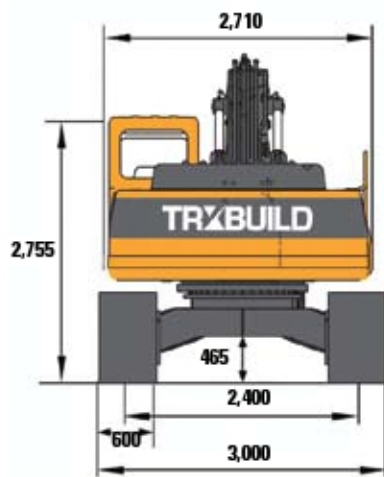
- Operating Weight (Ton) 24
- Standard Bucket Capacity (m³) 1.2
- Engine Power 126kW (172hp) @ 2,100rpm



**With a good grip on power and control,
the JY624 keeps going, even when the
going gets tough**

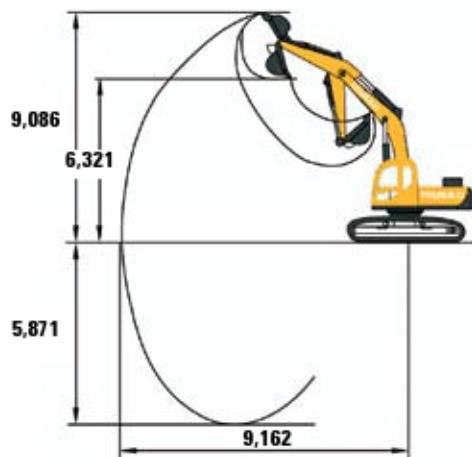
With a good understanding of construction demands, the JY624 offers power and control to give you optimal manoeuvrability in all general applications. Crawling through almost all types of hostile terrain, the JY624 will always get the job done for you, wherever you may be.





SPECIFICATIONS

Operating Weight (Tons)	24	Hydraulic System	Well-known Brands
Standard Bucket Capacity (m³)	1.2	Max Hydraulic Flow (L/min)	2 x 235
Diesel Engine	Cummins	Max Working Pressure (MPa)	30
Engine Model	6BTA5.9-C	Travel Speed (km/h)	3~5
Engine Power (kW)	126kW (172hp) @ 2,100 rpm	Grade Climbing Capacity (%)	65
Arm/Stick Digging Force (kN)	124	Slewing Speed (r/min)	13
Bucket Digging Force (kN)	140	Ground Pressure (kPa)	46



OPERATING SCOPE

Stick Length (mm)	2,000
Maximum Cutting Height (mm)	9,086
Maximum Dumping Height (mm)	6,321
Maximum Digging Depth (mm)	5,871
Maximum Reach (mm)	9,162

APPLICATIONS



Note: Specifications are subject to change by the manufacturer without prior notice.